



**CIRCLE
S
PRODUCTS, INC.**

TECHNICAL BULLETIN

TYPE: Horizontal In / Vertical downflow installations

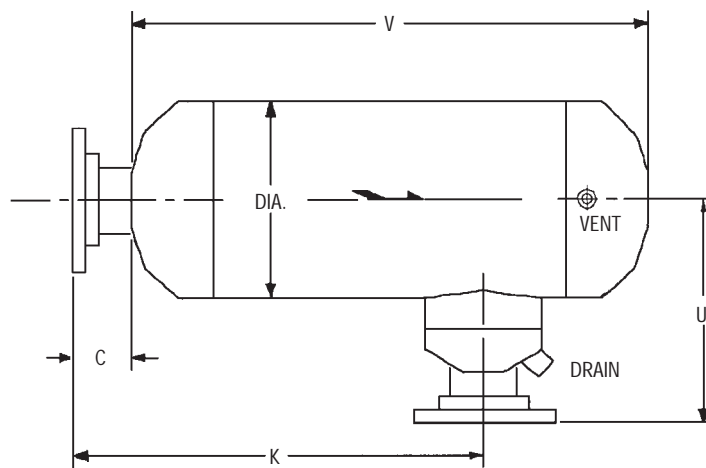
MODEL: Dry-Flo™ L4 Moisture Separator
TB No. S3400

Date 1-99

Model "L4" Separators are designed for horizontal inlet and a vertical down outlet flow installation only. The stainless steel Separating Tuyere Diffuser causes the stream to enter a controlled centrifugal flow. Due to the centrifugal motion, entrained liquids and solids are directed to the outer walls of the separator. Re-entrainment breaker plates create a quiet inert zone to prevent liquid from reentering the flow stream once separation has taken place.

With correct sizing and proper drainage, these separators are designed to eliminate 99% of all entrained liquids and particles that are 10 microns and larger in size.

The Model "L4" Separators can be fabricated from carbon steel or stainless steel and are manufactured in accordance with the ASME Code Section VIII, Division I.



DIMENSIONS AND WEIGHTS

PIPE SIZE	C	DIA.	K	U	V	NPT DRAIN	150# FLANGED	300# FLANGED
							DESIGN 150 PSIG @ 450° F	DESIGN 500 PSIG @ 650° F
							WEIGHT	WEIGHT
1 1/2"	2 1/2"	5 9/16"	15 1/2"	8 1/2"	20"	1"	45	52
2"	3"	6 5/8"	17"	10"	22"	1"	55	61
2 1/2"	3"	6 5/8"	17"	10"	22"	1"	63	71
3"	3"	8 5/8"	19"	11"	25"	1"	93	107
4"	4"	10 3/4"	24"	14"	30"	1 1/2"	148	179
5"	4"	12 3/4"	28"	15"	36"	1 1/2"	218	259
6"	4"	14"	31"	17"	40"	1 1/2"	256	321
8"	5"	16"	40"	19"	50"	2"	420	498
10"	5"	20"	47"	22"	59"	2"	529	864
12"	5"	24"	54"	25"	68"	2 1/2"	730	1262
14"	5"	28"	60"	28"	76"	2 1/2"	1076	1738
16"	5"	30"	68"	29"	86"	3"	1202	2792
18"	6"	36"	77"	33"	96"	3"	1539	2998
20"	6"	36"	83"	34"	104"	4" *	1769	5028
22"	6"	42"	90"	38"	114"	4" *	2665	5369
24"	6"	42"	101"	38"	126"	4" *	3076	6388

* Flanged Drain

PHONE 734-675-2960

FAX 734-675-6577

www.dryflo.com